

QSS Simulator for Net Order Manual Rev 1.00

November 27, 2003

1. Table of Contents

1. Table of Contents.....	2
2. Introduction	2
3. Revision Record	2
4. Overview	3
5. Operating Condition of QSS Simulator for Net Order	3
6. Installation of QSS Simulator for Net Order	3
7. Startup and Closedown of QSS Simulator for Net Order	4
8. Preparation	5
9. Entering Net Order mode	7
10. Simulate Printing Operation	8
11. Set the Order Status	9
12. Set the Installed Paper Magazine	10
13. Show the Detail of Order Data	11
14. Show the Order Record	12
15. Change the Order of Processing	13
16. Reserve the Order	14
17. Delete the Order	15

2. Introduction

This document describes the operating instructions of QSS Simulator for Net Order.

3. Revision Record

<i>Date</i>	<i>Description</i>	<i>Revision</i>
Nov. 27, 2003	Newly created	1.00

4. Overview

QSS Simulator for Net Order is the application that enables to simulate the Net Order mode of QSS. By using this application, you will be able to conduct checking of operations of Net Order Client without having QSS on line.

5. Operating Condition of QSS Simulator for Net Order

Below is the minimum requirement for QSS Simulator for Net Order to work normally.

Monitor:	resolution of 1024 x 768
PC:	PC/AT compatible
CPU:	Pentium III 500MHz or compatible processor (Pentium III 1GHz or higher is recommended)
Memory:	256 Mbyte
HDD:	1Gbyte required for installation of QSS Simulator for Net Order, and additional 3 Gbyte required for receiving orders.
OS:	Windows 2000 Professional SP4
LAN card:	One that supports Windows 2000 Professional
Protocol:	TCP/IP

6. Installation of QSS Simulator for Net Order

1. Start Explorer and copy the contents of CD-ROM drive to "C:\".
2. Uncheck "Read-only" checkbox in the Properties of all the folders and files in "C:\NETORDER_SDK".

In order to uninstall QSS Simulator for Net Order, open Explorer and delete all the folders and files in "C:\NETORDER_SDK".

7. Startup and Closedown of QSS Simulator for Net Order

7.1. Startup

1. Start Explorer and show the contents of “C:\NETORDER_SDK\QSS_Simulator\Exe”.
2. Double-click on “QSS_SEQ.exe”.
3. QSS Simulator for Net Order will start. After a while, “Do not vibrate the machine. Vibration affects print quality”, so click [YES: Confirm] button.

7.2. Closedown

In order to close QSS Simulator for Net Order, click the close button on the upper right corner of the QSS_SEQ window.

8. Preparation

Please be sure you have done the following in order to use QSS Simulator for Net Order.

1. Language setting
2. Option registration
3. Operator selections

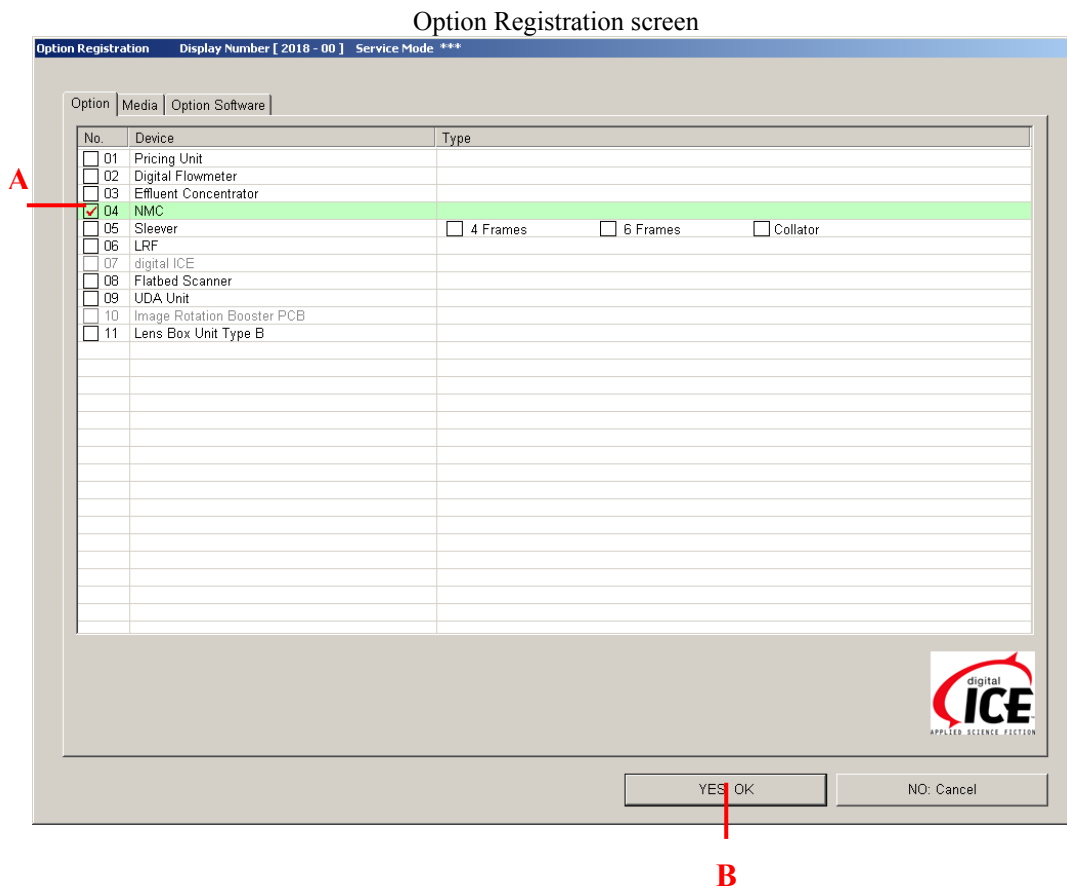
8.1. Language setting

1. Press [ALT] + [A] keys in Order display.
2. A window is provided where you can select a desirable language to be displayed. Choose English if you wish to use English, and Japanese if you prefer Japanese.

8.2. Option registration

Register NMC in Option Registration screen.

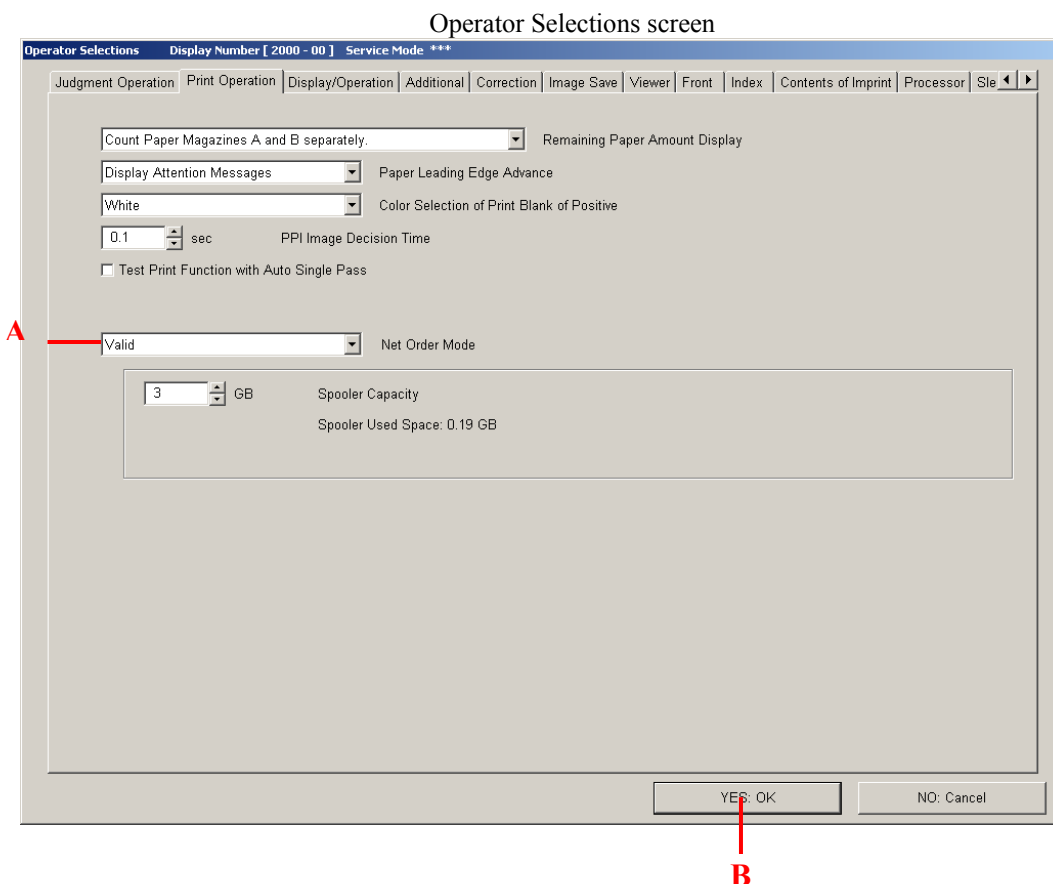
1. Choose “F” in Order display > Menu > Extension > Option Registration and then choose Option tab.
2. Check the “NMC” box (A in the figure below).
3. Click [YES: OK] (B in the figure below).



8.3. Operator selections

Enable the Net Order mode in Operator Selections screen.

1. Choose “F” in Order display > Menu > Extension > Operator Selections and then choose Print Operation tab.
2. Choose “Valid” for “Net Order mode” (A in the figure below).
3. Click [YES: OK] (B in the figure below).

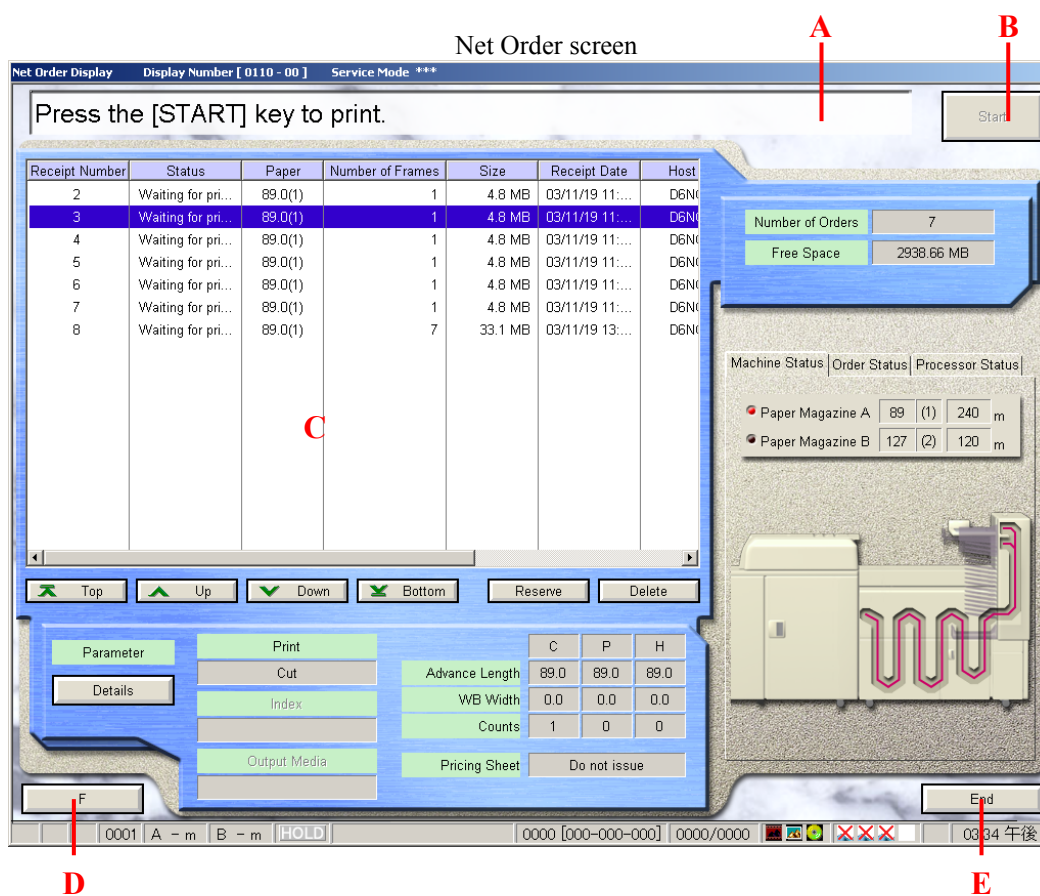


9. Entering Net Order mode

In order to register a new order to QSS Simulator for Net Order from Net Order Client, you must enter Net Order mode.

9.1. Entering Net Order mode

1. In the Order display of QSS Simulator, choose “F” > “Net Order mode”.
2. The following screen is brought up.



9.2. Description of Net Order screen

- A: Message display area
Shows a string to notify the current status of QSS Simulator for Net Order.
- B: [Start] ([Stop]) button
Clicking this button will initiate or stop print simulation accordingly.
- C: Spooler display area
Lists the orders that have been received with its detail. Orders are listed in the order that they have been received. Operator can change the order if needed.
- D: [F] button
Clicking this button will show the FUNCTION menus.
- E: [Close] button
Clicking this button will close Net Order mode and bring back the Order display.

9.3. Going back to Order display

1. Click “Close” in Net Order screen.
2. The “Are you sure you want to exit Net Order Receipt?” message will be shown, so click [YES: OK].
3. Order display will be brought up.

10. Simulate Printing Operation

Print simulation is the function that enables to change the order status automatically as if the actual printing operation is performed.

1. Enable the Net Order mode, and bring up the Net Order screen.
2. Register an order from Net Order Client.
3. Click “Start” in Net Order screen.
4. Print simulation will start.

Once Print simulation starts, order status “Waiting for Prints” will be changed automatically to “Printing” as if printing operation is performed.

When the print simulation is completed, the order will be deleted automatically from the spooler display area and, if there is another order of “Waiting for Prints” state, then print simulation for the order will start in succession.

At this time, “Start” button is changed to “Stop”.

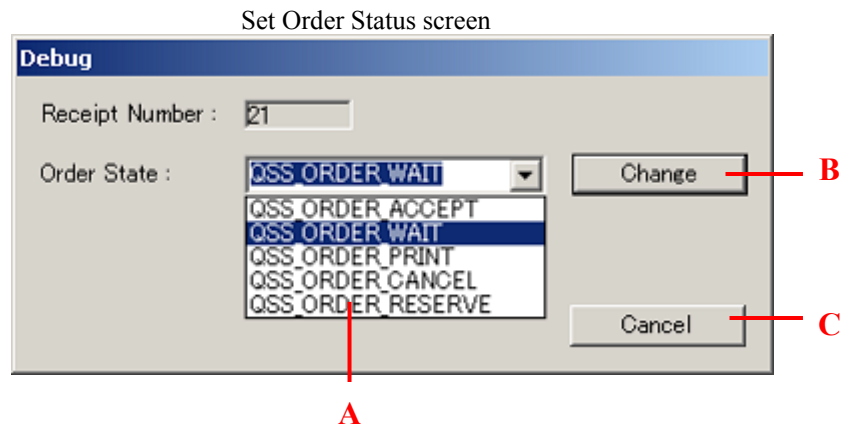
In order to finish print simulation, click “Stop”.

There are cases where the order whose printing is simulated will not be deleted even though you attempt to delete it.

11. Set the Order Status

You may set up the status of the order in the Net Order spooler.

1. Check to make sure in the Net Order screen that the “Start” button is shown (i.e. it is ready to receive orders).
2. In the Spooler display area, choose an order whose current status is either “Waiting for Prints” or “Reserve”.
3. Click “F” in Net Order screen, and bring up the Functions screen.
4. Click “Set Order Status” from the Functions menu and bring up the Set Order Status screen. (You may also bring up this screen by pressing [Ctrl] + [Alt] + [O] in Net Order screen.)
5. Choose an order state from the “Order State” combo box (A in the figure below) in the Set Order Status screen and click “Change” (B in the figure below) so the order state will change to the state you have just selected.



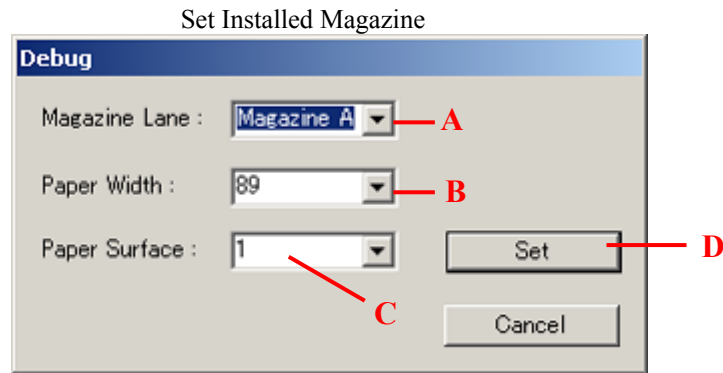
You may select the following order state.

QSS_ORDER_ACCEPT	Accepting an order
QSS_ORDER_WAIT	Waiting for printing operation
QSS_ORDER_PRINT	Printing
QSS_ORDER_CANCEL	Canceling
QSS_ORDER_RESERVE	Reserved

12. Set the Installed Paper Magazine

By setting the installed paper magazine to use with QSS Simulator for Net Order, it will be possible to choose the desirable paper magazine from the Net Order Client to register an order.

1. Check to make sure in the Net Order screen that there is no order currently being processed (accepted, printed, canceled, or written to media).
2. Click “F” in Net Order screen, and bring up the Functions screen.
3. Click “Set Installed Magazine” from the Functions menu and bring up the Set Installed Magazine screen. (You may also bring up this screen by pressing [Ctrl] + [Alt] + [M] in Net Order screen.)
4. Choose desirable Magazine Lane (A in the figure below), Paper Width (B), and Paper Surface (C), and click “Set” (D) so the corresponding paper magazine will be set up.



Magazine Lane: Select the lane where the paper magazine is installed.

Paper Width: Select the width of the paper. (unit: mm)

Paper Surface: Select the surface type of the paper. (range: 1 – 4)

13. Show the Detail of Order Data

You may show the detailed information of order data to confirm the contents of the order.

1. Choose a spooled order.
2. Click “Detail” in the Net Order screen so the Order Data Details screen will be brought up so you will be able to check the description of the order.

Order Data Details screen

Order Data Details Display Number [0110 - 01] Service Mode ***

Receipt Number

Host Name

User Name

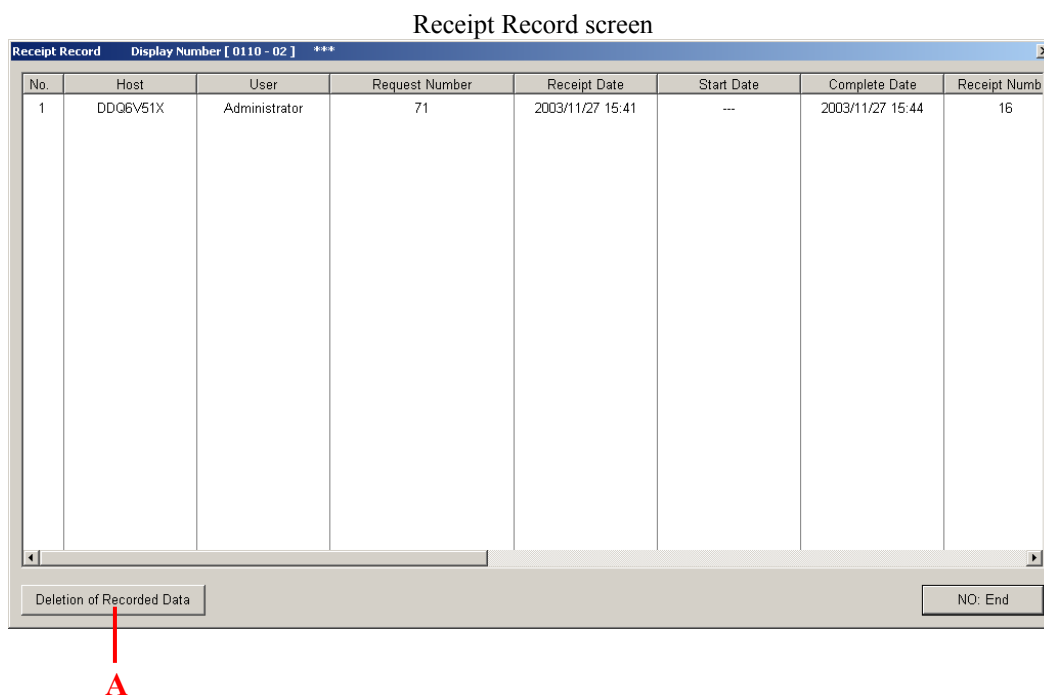
Request Number Number of Frames

No.	File name	Size	Print Size	Repeat Counts
1	DG006.JPG	18536142	C	1
2	DG002.JPG	18536142	C	1
3	DG003.JPG	18536142	C	1
4	DG004.JPG	18536142	C	1
5	DG005.JPG	18536142	C	1
6	DG001.JPG	18536142	C	1

14. Show the Order Record

You may show the record of the orders that have been processed via Net Order. Note that only the orders that have been completed or deleted successfully are listed.

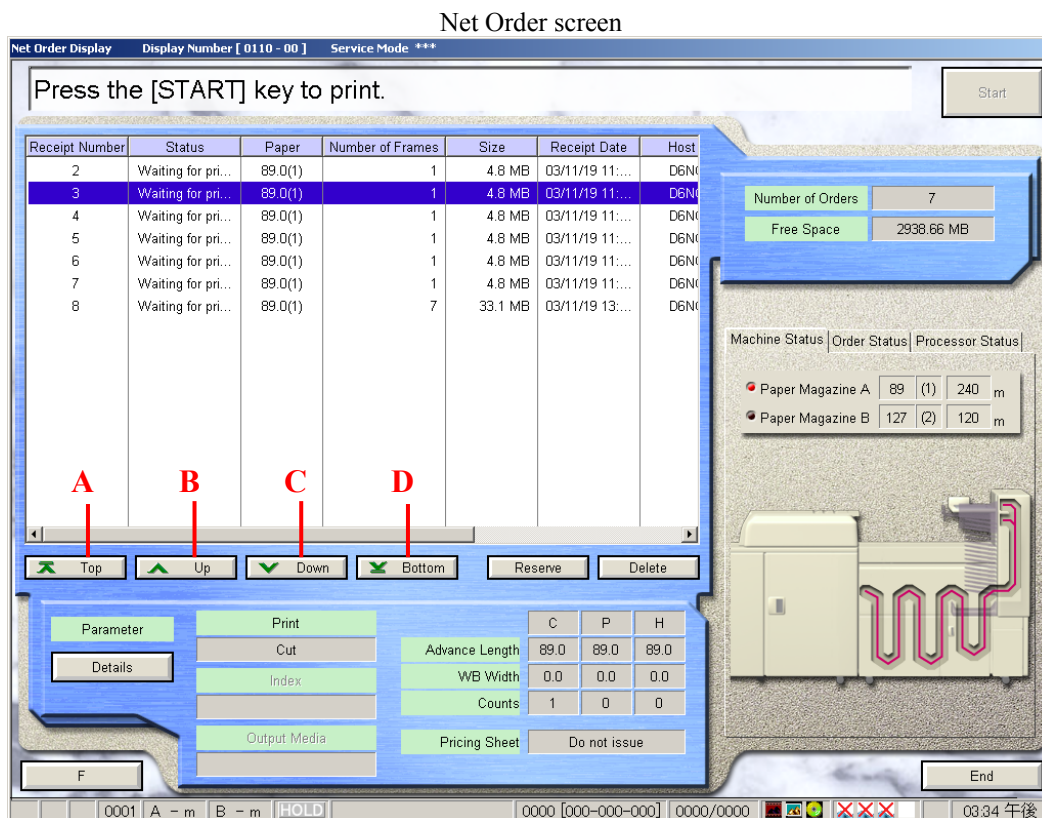
1. Click "F" in Net Order screen, and bring up the Functions screen.
2. Clicking "Receipt Record" from the Functions menu will bring up the Receipt Record screen where you may see the orders that have been processed via Net Order.
3. Clicking "Recorded Data Delete" (A in the figure below) will clear the order records.



15. Change the Order of Processing

You may change the order of processing of the orders by clicking the following buttons in Net Order screen.

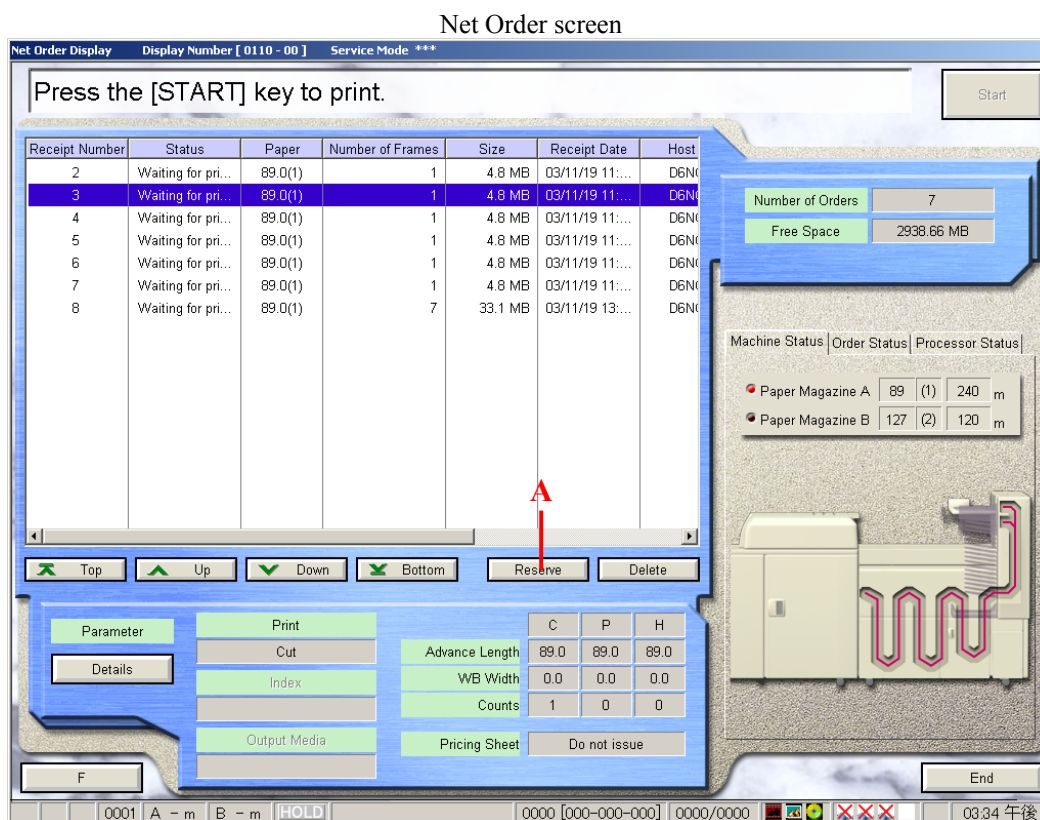
- “Top”: bring the selected order to the top so it will be processed first.
- “Up”: bring up the selected order in increments of one.
- “Down”: bring down the selected order in increments of one.
- “Bottom”: bring the selected order to the bottom so it will be processed last.



16. Reserve the Order

You may reserve the printing operation of the order that has been received via Net Order.

1. Clicking “Reserve” (A in the figure below) button in Net Order screen will change the status of the selected order from “Waiting for Prints” to “Reserve”. Upon clicking, the button name will change from “Reserve” to “Release”.
2. Clicking “Release” will change the status of the order from “Reserve” to “Waiting for Prints”.



17. Delete the Order

You may delete the order that has been received via Net Order. Clicking the “Delete” button (A in the figure below) in the Net Order screen will delete the order you have selected in the spooler display area.

